

OCTOBER 2018

RONDO®
insideR

**RED EARTH ARTS PRECINCT
WESTERN AUSTRALIA**

**PRIDHAM HALL
UNIVERSITY OF SOUTH AUSTRALIA**

**MELBOURNE CONVENTION CENTRE
VICTORIA**

AND MORE...

**PLUS
NEWS & UPDATES**



LATEST NEWS

Safety is essential in any business, but it's even more crucial in a Manufacturing, Maintenance and Distribution environment. This is especially true at Rondo, where we are determined to achieve a perfect record. That's why we recently launched our 'Towards Zero' Safety program.

TOWARDS ZERO SAFETY PROGRAM

Towards Zero is designed to;

- Clearly communicate our goal of zero incidents, zero injuries and zero excuses
- Ensure every Rondo employee is responsible for their own safety and the safety of others
- Create a strong safety culture at Rondo by working together

WHAT DO WE MEAN BY WORKING TOWARDS ZERO?

• Zero Incidents:

This includes everything from near misses, to accidents, bullying or harassment or inappropriate behaviour

• Zero Injuries:

Ranging from a minor incident through to a severe injury

• Zero Excuses:

- We put Safety first in every situation
- Every Employee is responsible for their own safety and the safety of others
- All hazards, incidents and injuries are to be reported
- We speak up if we're aware of any safety issues or incidents of bullying and harassment
- We will work together to create a strong safety culture at Rondo
- Safety will not be driven by cost or resistance to change

RONDO TOWARDS ZERO NON-NEGOTIABLES

To further ensure the safety of our Employees, Contractors and Visitors, Rondo has introduced six Towards Zero Non-Negotiables that everyone entering any Rondo site must follow:

- "I am responsible for the safety of myself and others"
- "I use appropriate Manual Handling Techniques"
- "I always wear my PPE"
- "I adhere to mobile plant rules"
- "I will follow the isolation procedure"
- "I shall be safe when working off the ground"

We know that zero is a big goal for Rondo. It goes without saying that closing the gap on zero incidents and injuries is a long-term objective. But together, we are committed to taking steps towards our goal and improving the way we do things year after year.

Every step counts and having a safer workplace for our people makes every effort worthwhile.

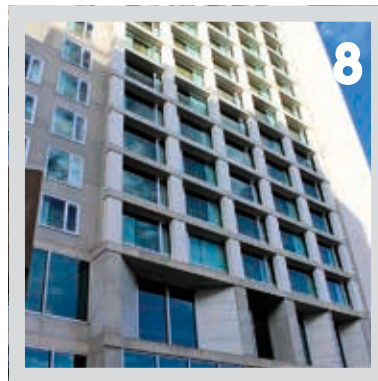
TOWARDS
ZERO
ZERO ACCIDENTS. ZERO INJURIES. ZERO EXCUSES.

CONTENTS

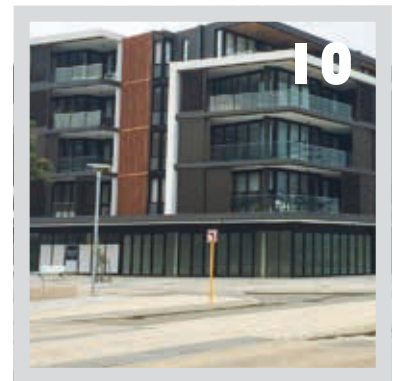
PROJECTS:



RED EARTH ARTS PRECINCT
Western Australia



QT PERTH
Western Australia



LATITUDE ON LEIGHTON
Western Australia



THE PODIUM
Queensland



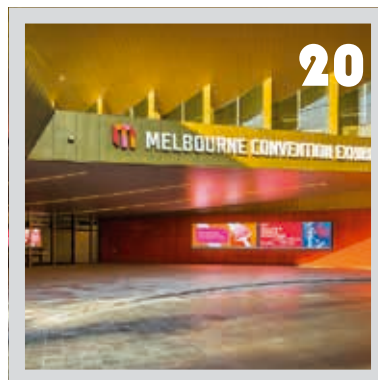
CPAC
Queensland



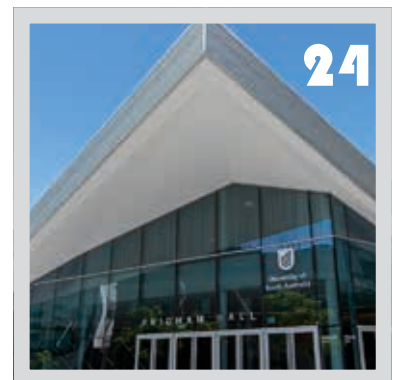
ELM & STONE APARTMENTS
Victoria



NO 1 COLLINS WHARF
Victoria



MCEC
Victoria



PRIDHAM HALL
South Australia

UPDATES:

RONDO APP UPDATED [28](#)

KIDS UNDER COVER:
CHARITY RACE DAY [30](#)

THE NEW CULTURAL HEART OF KARRATHA



A stunning new development in the Pilbara, Western Australia, the Red Earth Arts Precinct needed Rondo engineered designs for seismic requirements and feature walls and ceilings.



BEGINNING IN SEPTEMBER 2016, the \$55m Red Earth Arts Precinct was officially complete in February this year and is already winning praise left, right and centre! Located at the entrance of the city, it will bring culture inside and outside of Karratha to life. The development includes an arts centre, gallery space, an outdoor event space with an amphitheatre as well as a new library and space for the local history office.

The Project team consisted of Builder, Doric, who awarded the ceiling and wall package to Ceiling & Wall Contracting (CWC), and KB Carpentry. Rondo Partner Network Distributer, Superb Group, provided supply of various Rondo products.

Rondo was engaged by Architecture firm, Peter Hunt Architects early in the documentation stages of the project, allowing an ease of understanding between all parties.

Rondo's Technical Team provided specific engineered designs for the sensitive seismic requirements and bespoke feature ceiling and wall linings. The featured triangular foyer ceiling and high internal wall framing were designed specific to the project, offering the Architect, Builder & sub-contractor, clear Rondo installation configurations to meet the project requirements.

In addition, due to the location (1522km or 15hr 30min drive) from Perth, it was a no-brainer to enlist contractor, CWC to do part of the work as they were already mobilised on the Karratha Health Campus Project Site.

Being set up logistically, CWC were in the perfect position to supply and install on this project with minimal disruption. All in all, the community precinct received a \$14.5m investment through the State Government's Royalties for Regions initiative.

Other facilities include a war memorial, a 450-seat standard theatre, a rooftop terrace, entry foyer, administration office and a gallery.

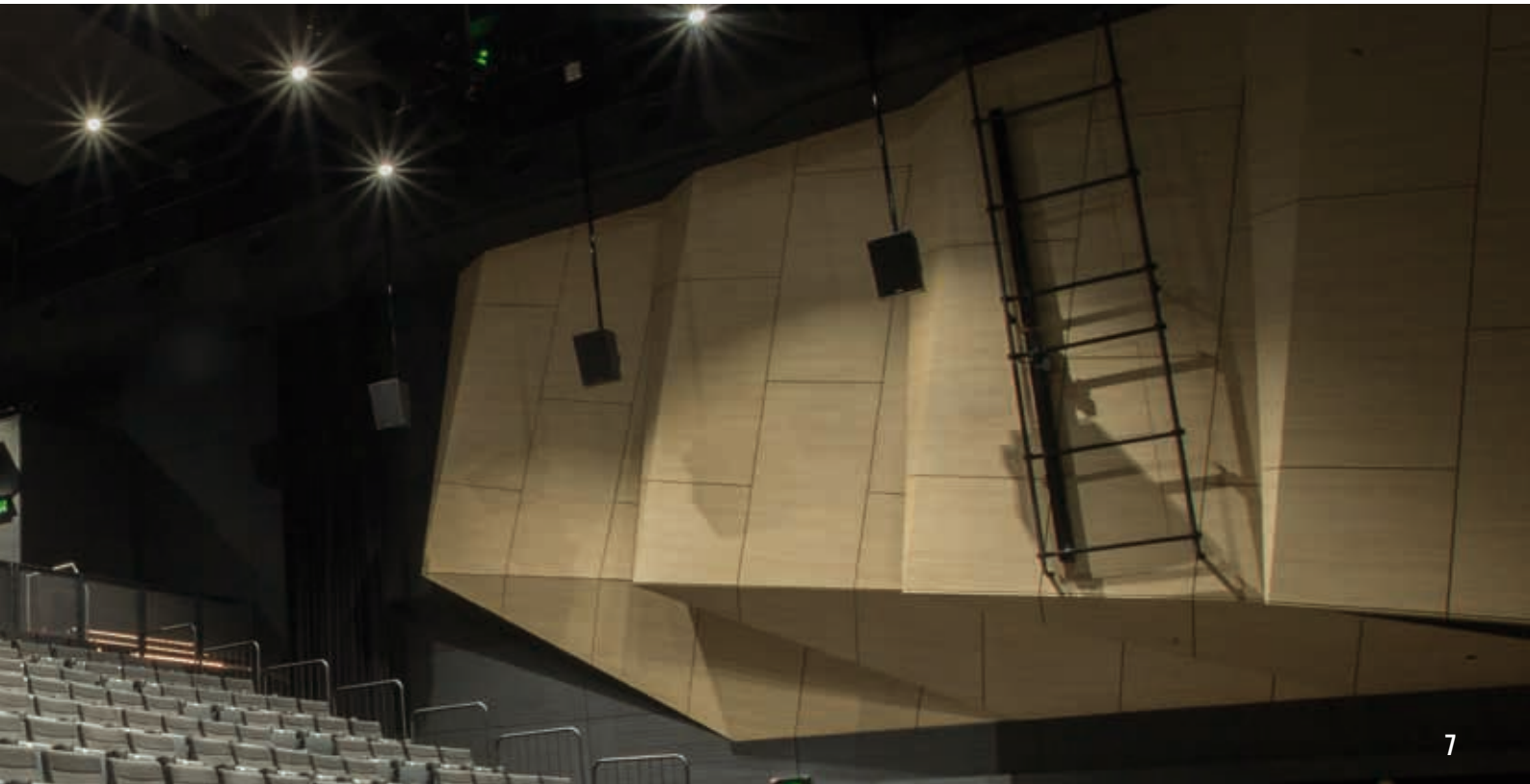
Now events such as the Melbourne Comedy Festival will have more than just a basketball court to visit when they come to Karratha.

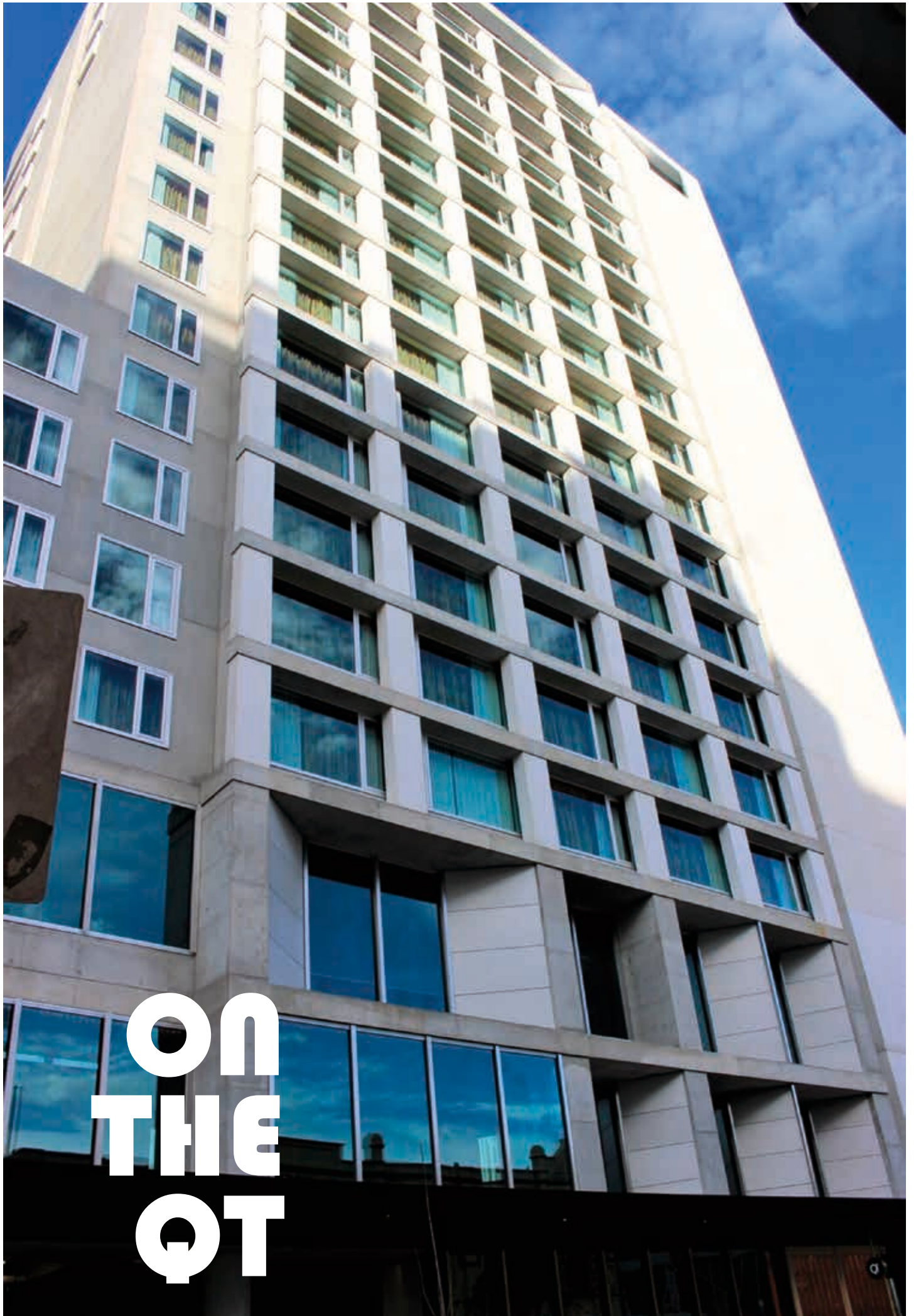
The Red Earth Arts Precinct will certainly make a huge contribution to the cultural and social success of the Pilbara region in the years to come.

Rondo products included:

- KEY-LOCK® Seismic Concealed Ceiling System
- DUO® Seismic Exposed Grid Ceiling System
- Steel Stud Drywall Ceiling System
- Rondo MAXIjamb® External Wall Framing System
- Top Hats, Angles and Tools







**ON
THE
QT**

LOCATED RIGHT ON the doorstep of the Murray Street Mall, less than a minute walk to Perth's shopping hub lies the newly finished QT Perth.

Beginning construction two years ago and completed in July, the \$21.5m Hotel offers the highest rooftop party venue in Perth with amazing views over the Swan River, Perth Hills and Optus Stadium.

Designed by Architect's Candalepas Associates and led by Builder, Built Pty Ltd, the dynamic hotel brands first establishment on the west coast kept its renowned contemporary, 'urban cool' aesthetic feel.

However, before the aesthetic could come to fruition, the bones of the walls and ceilings needed to be properly installed and managed and that's where Future Carpentry & Ceiling Pty Ltd and Rondo entered the game.

In some areas, internal partitions needed to be designed to bear additional loads to support hotel appliances. Similarly, other walls had stone cladding that Rondo's Technical team were required to provide engineering solutions on.

Rondo helped the bones of the project in almost every way, supplying designs for internal and external walls, stone clad walls, stair dividing walls and so on.

For instance, the guest room ensuite walls were mainly comprised of glazed aluminium panels made overseas. Unfortunately, this meant there were minimal tolerances in the set-out.

Yet, because the hotel floors were generally the same layout, Rondo created a template system for setting out most of the guest rooms while also ensuring that ceiling heights were set exactly.

What's more, part of the façade was a clear sealed 9mm CFC in a "sawtooth" layout. To achieve this, Rondo used a 150mm Stud and Top Hat counter batten system designed by the Rondo Technical Team.

All in all, the project ran as smoothly as one of this size could. There were no issues with product availability, delivery or accuracy and after working with Future Carpentry for over 15 years, there were limited hiccups when forecasting demand and product requirements.

With 184 rooms, 21 Apartments and a plethora of unique event spaces, QT Perth is sure to live up to the reputation of its eastern seaboard siblings.



Rondo products included:

- KEY-LOCK® Concealed Ceiling System
- Stud & Track Drywall Framing System
- Rondo Shaftwall One-Way Erected System
- Building Accessories

MAKING WAVES



BEACHSIDE LIVING IN Perth has never been so stylish since the completion of the new Latitude on Leighton apartments, in North Fremantle.

Designed by Mirvac Pty Ltd, the \$75M Built development, which began in May 2016 and finished in March this year, was even awarded WA's first 4 Star Green rating for Multi-Unit Residential.

Not only that, the project recently won Best Multi-Unit Development at the Master Builders-Bankwest Excellence in Construction Awards.

This is a great achievement, especially considering that when Rondo were approached by contractor, Metrex, to assist with Latitude's wall and ceiling design, it was only 70% design ready leaving Rondo the task to finish the remaining 30% requirements.

One example of these requirements was to have internal ceilings designed to accept internal pressures. Unfortunately,

some of these ceilings had already been installed so Rondo contacted their Technical Design Engineer, Alex Lee, who travelled from Sydney head office to provide efficient onsite solutions to help overcome this challenge.

Importantly, in order to ensure the timeline wasn't compromised Rondo created a drawdown order process for Metrex. This allowed both Rondo and Metrex to mitigate 'out of stock' scenarios.

The drawdown was set up over stages to help guarantee the Rondo warehouse was not overstocked with product. Some other tasks Rondo gave commentary on or design solutions for are as follows:

- Meridian Building Apt 503 2.75m (h) x 3m (w) glass partition wall
- Ceilings and feature aluminium ceilings with internal pressures considered
- H535 Top Hat detail for 6mm Fibrous Cement Strip (External)



- Bulkhead with LED Light - Building B
- Opening to support 100kg window
- Recessed linear bar grille bulkhead
- Rondo framing FC/CFC to external louvres
- Shelf loads
- Shower screens
- Spandrel Panel
- Trespa panel external soffits
- Vanities

Plus, regular site visits were conducted to ensure the 30% design requirements were met.

Simply stated, Latitude on Leighton is not only in a great location, it is also well built and incorporates state of the art technologies, which minimise environmental impact.

Can't ask for much more than that!

Rondo products included:

- KEY-LOCK® Concealed Ceiling System
- Steel Stud & Track Drywall Ceiling System
- PANTHER® Wall & Ceiling Access Panels
- Building Accessories
- Plastering products



TAKING THE PODIUM

THINGS ARE REALLY happening in Brisbane. And one of those things is the development at 300 George Street known as The Podiums. Set on the old law courts site in Brisbane's CBD, the \$800m Multiplex development is 13,804m² in size, split over three levels.

Beginning works in August 2015, Rondo have been heavily involved in the construction, side by side with Contractor, Superior Walls & Ceilings.

Completed in June, the project has three levels that incorporate restaurants, cafes, bars, a supermarket, amphitheatre, luxury high-end flagship stores, master ballroom and viewing platforms, as well as the six-star W hotel that has just been completed on top of the Level 3 podium.

Superior were responsible for arranging the external and internal partitions, feature ceilings and bulkheads and worked together with Rondo to achieve the desired result. The feature ceilings and bulkheads were extremely detailed. Superior and Rondo had to put their heads together and use all their knowledge and experience to overcome some challenging hurdles.

For instance, Superior faced the challenge of creating curved detailed bulkheads and feature ceilings. However, with Rondo's help using a hybrid of the Rondo KEY-LOCK® Concealed Ceiling System and Stud & Track Wall Framing System, they managed to create a great outcome.

At the same time, the end of the Podium stage does not mean the end of Rondo's involvement. With construction already beginning on the 81-storey residential tower and 39 storey commercial tower, Rondo will continue to supply the remainder of the project through Wadsworth Construction. Not only that, but at the QLD AWCI Awards in July, Superior won best overall project for 300 George Street for the W hotel lobbies – a testament to the design and teamwork between Superior Walls & Ceilings and Rondo.

When the entire development (designed by Architectural firm, DBI Design) is complete, it will have endured four stages:

1. *The Podiums*
2. *The "W" hotel on top of The Podiums*
3. *The commercial office tower next to the W hotel*
4. *84-story residential tower*

Rondo products included:

- Steel Stud & Track Drywall Framing System
- RAPID® Drywall Grid System
- KEY-LOCK® Concealed Ceiling System
- Shaftwall One-Way Erected Ceiling System
- PANTHER® Access Panels
- EXANGLE® Finishing Sections
- EXTREME® PVC Beads



AN EXCEPTIONAL PERFORMANCE

CAIRNS
PERFORMING
ARTS
CENTRE



The soon-to-be-completed Cairns Performing Arts Centre (CPAC) required technical designs that were sympathetic to the cyclone region that is Cairns.



CULTURAL SPACE IS expanding in Cairns, thanks to the soon to be completed Performing Arts Centre (CPAC). Replacing an existing and much smaller centre, CPAC, designed by both CA and Cox Rayner Architects is due to be finished in November this year, with a grand opening scheduled for December 15.

Rondo assisted Contractor, Interline, under Builder FKG Group. A large part of the support meant assisting with technical designs that were sympathetic to the cyclonic region that is Cairns.

This entailed technical designs for higher internal wind pressures and both Rondo's Technical Team and Interline working closely to give solutions for many different wall types. In addition to this, as designs were often needed at very short notice, Rondo's excellent response time allowed the project to stay on track.

At 7385m², CPAC will provide seating for 940 people in the Proscenium Theatre (including balcony seating) and will feature an impressive 13.5m deep by 27m wide stage while space will be significantly increased in the foyer, bar area and public amenities.

The development will also offer a 'blackbox' theatre that can double as a 400-seat performance space, rehearsal and warm-up area. This in turn will offer improved back of house facilities, including more change rooms and toilets, a cross over, higher and covered loading bay; as well as providing a deeper stage, more spacious wings, higher proscenium arch, higher fly tower and more fly lines.

Being one of the largest local contractors, Interline demonstrated that they could deliver high-quality workmanship, on time.

The centre is a much-needed venue for the people of Cairns and the region to attract high quality performers, along with somewhere to show off to the world what the local talent has to offer.

Rondo products included:

- DUO® Exposed Grid Ceiling System
- KEY-LOCK® Concealed Ceiling System
- Steel Stud & Track Drywall Framing System



JOINING THE CLUB of high rise living that is springing up all over our Australian cities, is Elm & Stone development at Docklands Quay in Melbourne.

Headed up by Built and Architect's DKO, the \$71m development is due to be finished this October.

Located in the heart of the Docklands precinct, the project comprises of two, 17 level towers – in one tower will be 221 serviced apartments for Quest Hotels and the other will include 142 private apartments.

Rondo were approached by Expoconti to supply the necessary wall and ceiling component of the build.

The tower features multiple "loft" style apartments, which allows it to nestle one and two-bedroom apartments in an overlapping formation, giving both high-ceiling living areas and lofty mezzanine interior spaces.

The design of the loft spaces meant replacing the already completed timber stud walls for the loft apartments with Rondo Steel Stud. This was achieved with design assistance from the Rondo Technical Team.

With the apartments featuring a Zen Garden, both outdoor and indoor pools with a BBQ and outdoor dining areas, a gym and a library, we are sure Elm & Stone will fit right into its luxurious neighbours, being built in the MAB NewQuay development.

When it's completed, MAB's NewQuay will be home to approximately 8,000 residents and 38,000 square metres of parks and gardens all integrated with public art and, of course, award-winning architecture.

Rondo products included:

- Steel Stud & Track Drywall Framing System
- QUIET STUD® Acoustic Wall System
- KEY-LOCK® Concealed Ceiling System
- EXANGLE® Finishing Sections
- PANTHER® Access Panels

NUMBER ONE



THERE IS A new precinct on the block in Victoria, and it is bringing with it some luxurious trimmings.

No 1. Collins Wharf is the latest part of the \$1.2 billion development of the Victoria Harbour precinct.

The 29-level apartment complex, built by Lend Lease and designed by Architectural firm, Bates Smart was completed in September this year and boasts 321 water-lined apartments and townhouses.

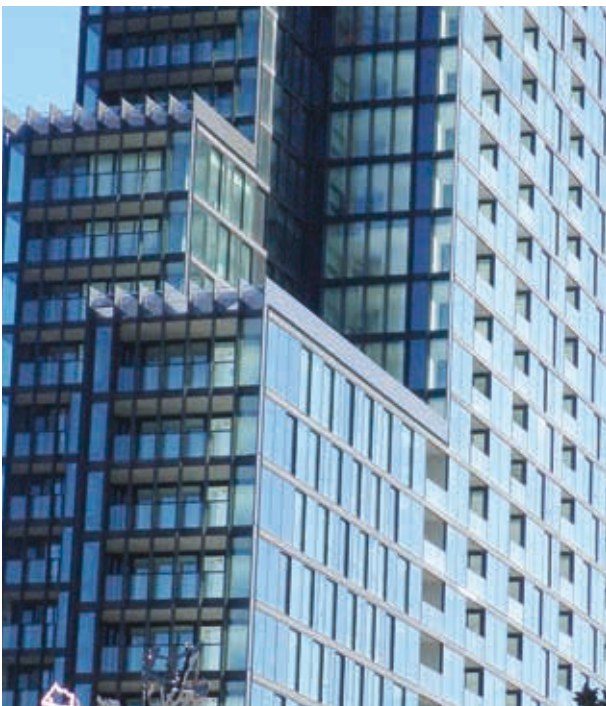
Expoconti were awarded the wall and ceiling contract for the \$106M development and soon after contacted Rondo to supply systems for the external walls, external cladding and internal suspended ceiling system.

Rondo's Technical Department slightly adjusted the design of the external walls of the townhouses to meet the Architect's specifications.

As well as the usual luxury apartment facilities we have come to expect, such as indoor swimming pool, gym, outdoor BBQ and entertainment area, all apartments also have uninterrupted views of either the city or the water, as well as private balconies so you can't lose!

Rondo products included:

- Steel Stud & Track Drywall Framing System
- MAXIFRAME® External Wall Framing System
- KEY-LOCK® Concealed Ceiling System
- Top Hats

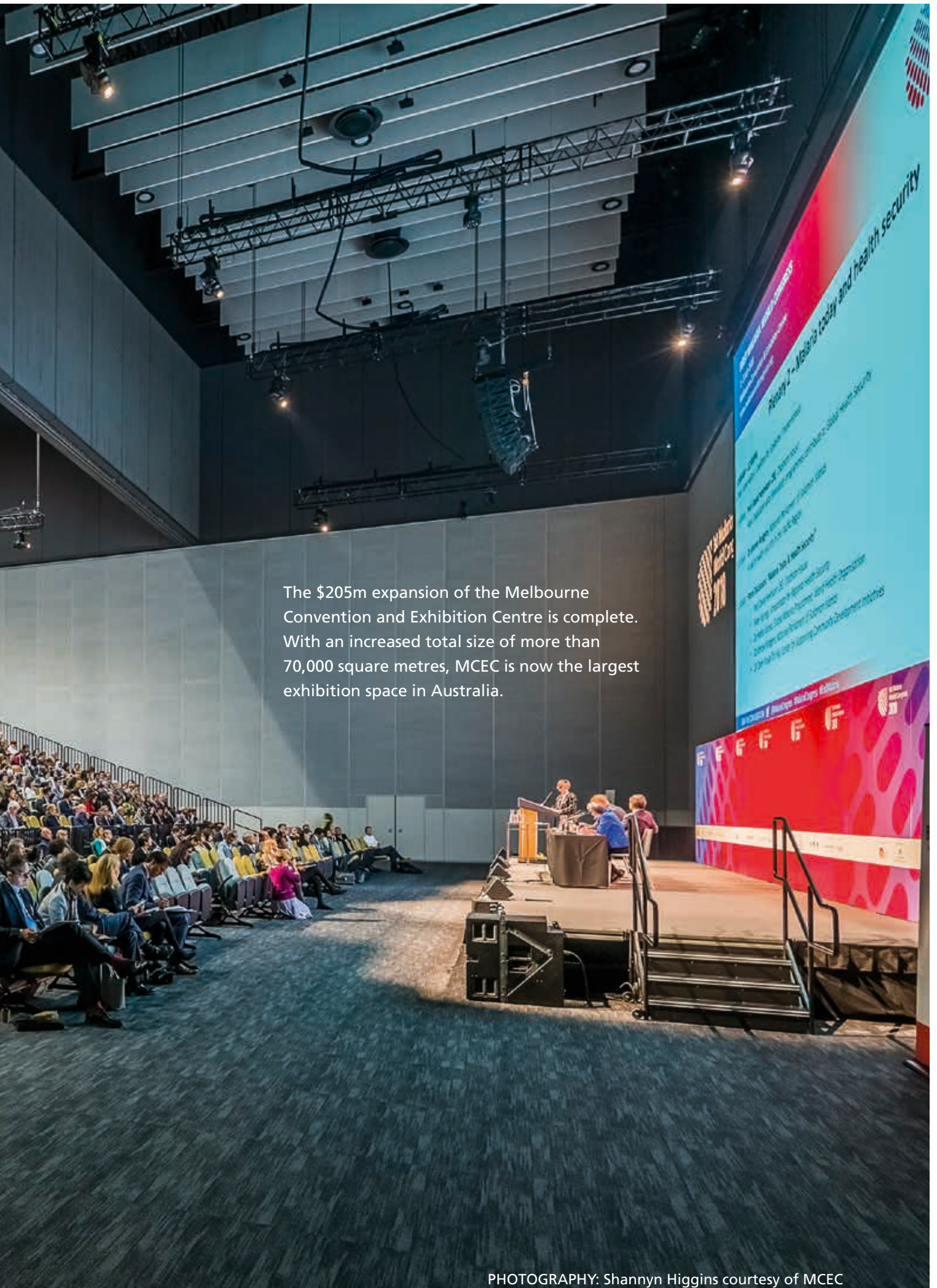


No. 1 Collins Wharf Melbourne: 29 levels of luxury





UN- CONVENTIONAL



The \$205m expansion of the Melbourne Convention and Exhibition Centre is complete. With an increased total size of more than 70,000 square metres, MCEC is now the largest exhibition space in Australia.

SINCE OCTOBER 2016, Rondo have been working hand in hand with Builder, Probuild, Contractor, Express Interiors and Architectural firms Woods Bagot (VIC) Pty Ltd and NH Architecture to provide labour and cost saving design solutions.

In collaboration with the Victorian State Government, as well as leading investor/developer, Plenary Group and partners, the extra 20,000 square metre upgrade includes 9,000 square metres of exhibition and multi-purpose event space, a 1000-seat plenary theatre, multiple meeting rooms, a banquet room and the Goldfields Café and Bar.

Speaking of the event spaces, Rondo provided designs to drop all the operable internal Exhibition and Banquet Hall walls (stack walls) down to 9 metres, as some originally reached up to an astounding 20 metres in height.

The development is part of a larger South Wharf expansion project that includes a new 347-room Novotel Melbourne South Wharf. Not to mention, a new 1,150-space multi-level car park – all fully connected and integrated with existing buildings.

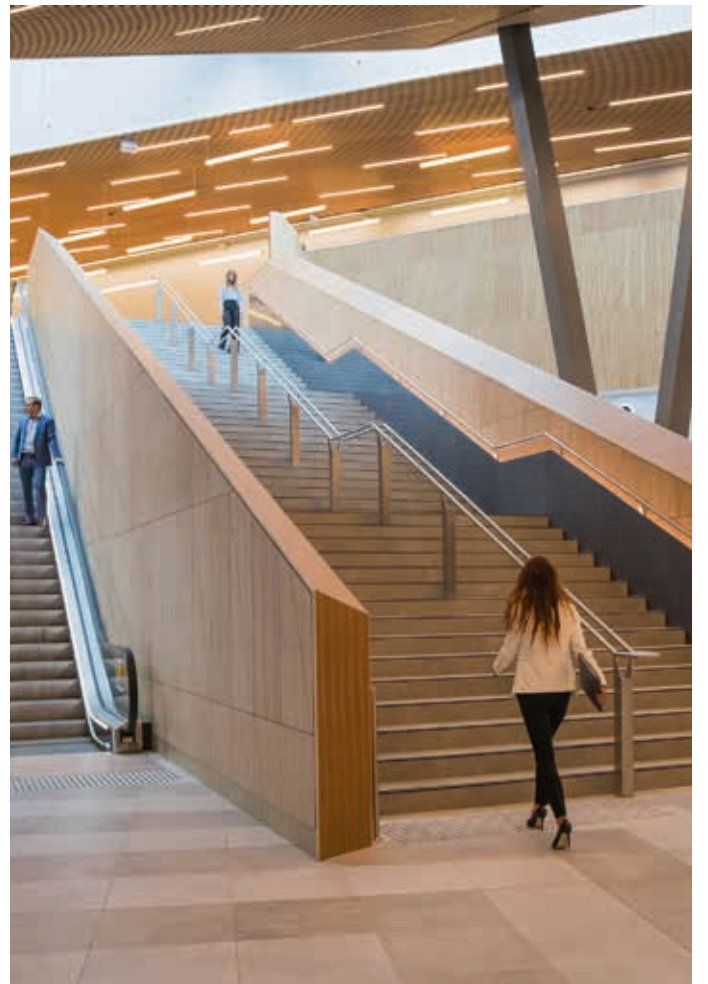
More than 300 events have already been confirmed or being negotiated for the new and improved entertaining precinct, to be held between July 2018 and the end of 2024.

It is anticipated the new event spaces will encourage an additional 74,000 international visitors annually, resulting in an annual \$167 million boost to the Victorian economy.



Other designs include soffit ceilings within the foyer constructed from our Stud and Track Framing System. For example, our Technical Services Team created a design option to drop the 10.3 metre curtain wall bulkheads which divided the exhibition areas, eliminating the need for structural steel and making it easier to install.

- Rondo products included:**
- Steel Stud & Track Drywall Framing System
 - PANTHER® Access Panels (Fire-rated)



AN INSPIRED APPROACH

Rondo products included:

- KEY-LOCK® Seismic Concealed Ceiling System
- Steel Stud & Track Drywall Framing System



THE UNIVERSITY OF South Australia (UNISA) certainly knows how to inspire learning with its surrounds. Unveiled at the end of 2017 the Great Hall, is the newest hub for students and staff of the UNISA.

Built by Mossop Construction & Interiors, the \$50m hall is located on campus at Hindley Street in Adelaide's CBD. The Great Hall, dubbed as a 'one-stop shop', will not only benefit University students and staff, but also the local community as it features a sports complex and swimming pool.



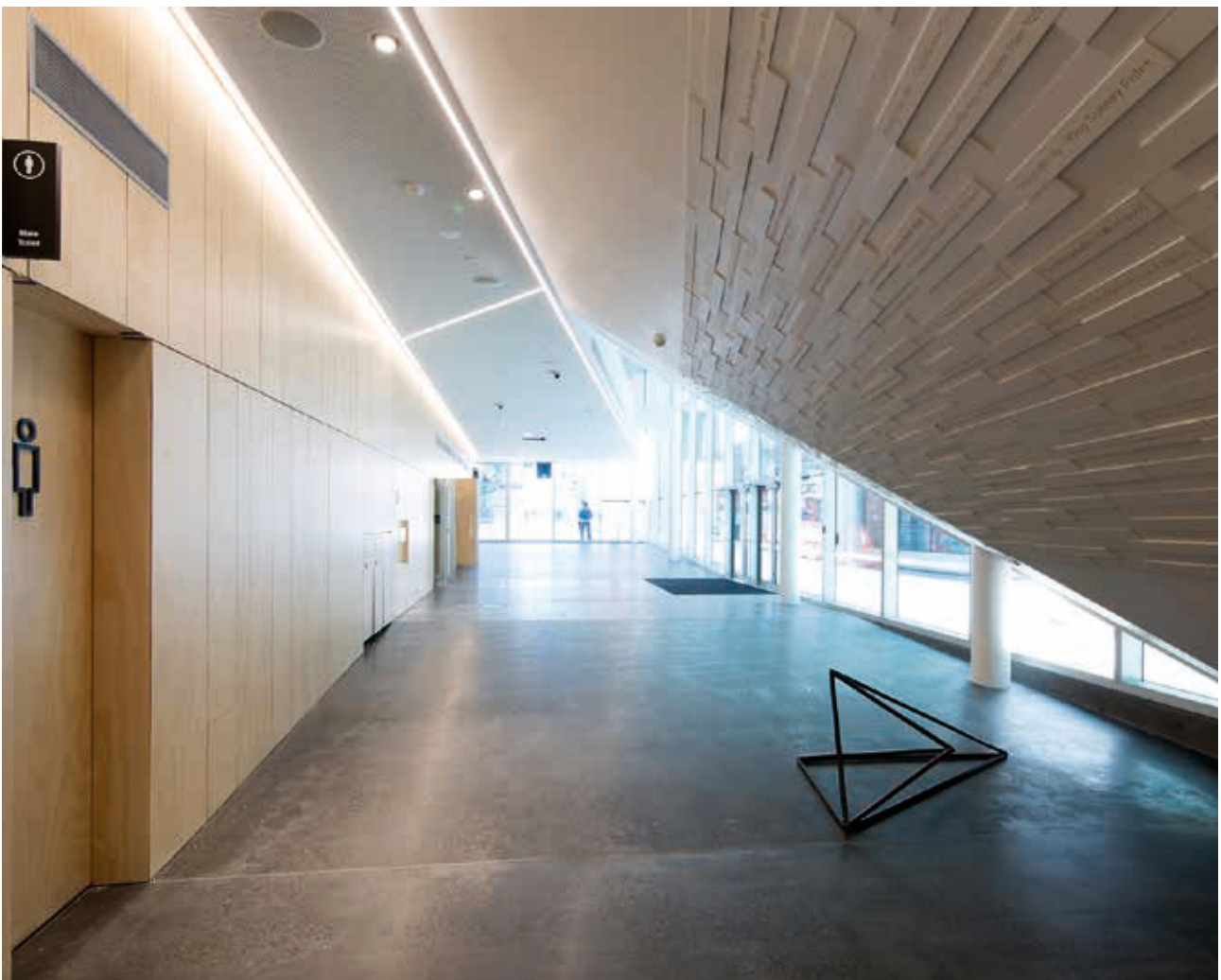
Rondo were approached to provide designs for full seismic requirements and worked with Ceiling & Wall Contractors Adelaide, to achieve the following:

1. Internal KEY-LOCK® Concealed Suspended Ceiling (seismic rated) was needed in order to account for services loads and heavy lining weights
2. PANTHER® Wall & Ceiling Access Panels
3. Bulkhead framing to support operable blind/curtain loads

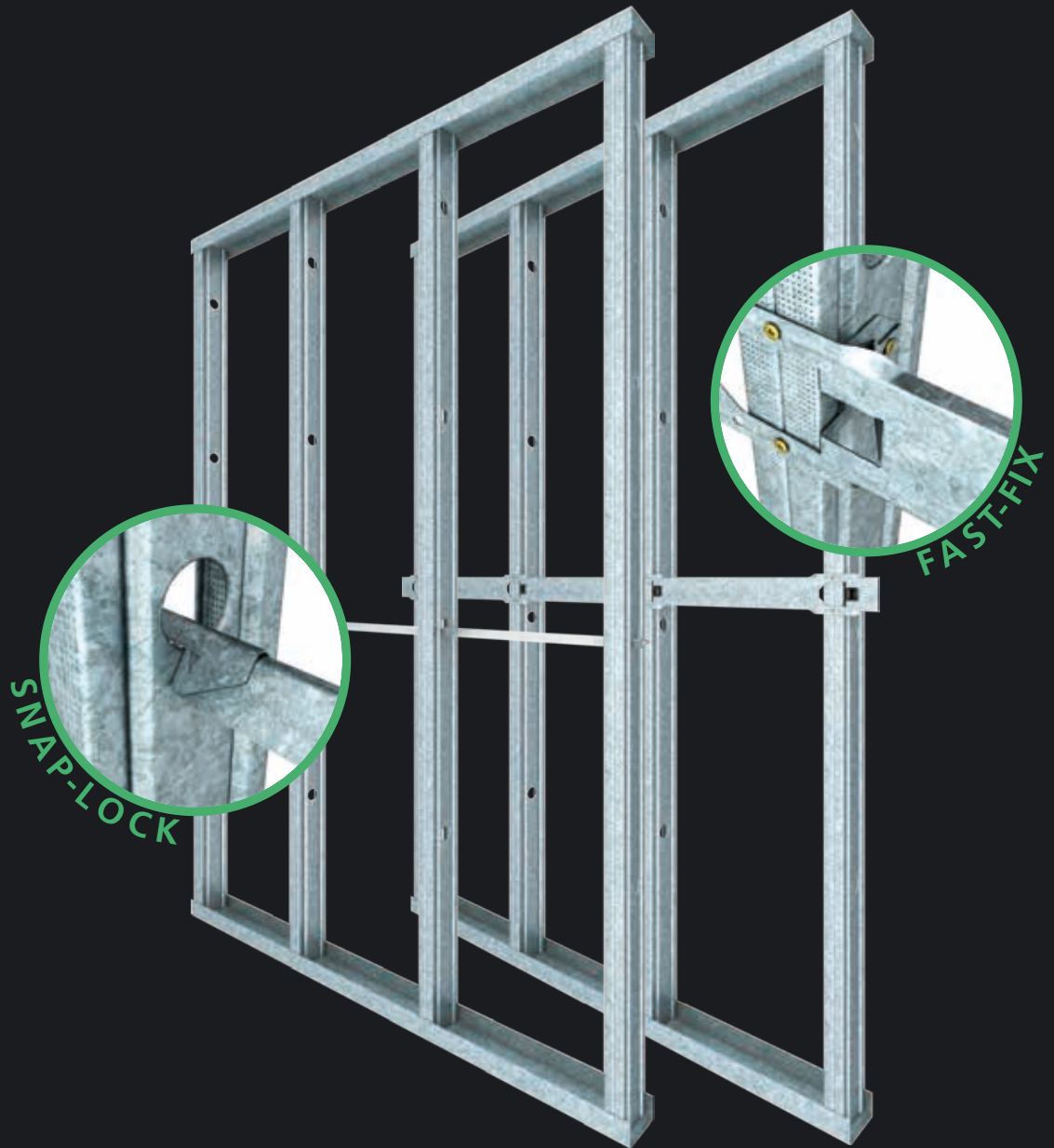
Further to this, Rondo also worked with their Technical Services department to provide solutions for Internal wall framing specification accounting for typical internal pressures and project specific seismic loads.

Designed by Architectural firm, JPE Design Studio, the multifunctional building will be the centre for UNISA sports, graduation, exams and an overall space for University functions. One of its main features is the multipurpose hall that can be transformed from a 2-basket court sports facility to a graduation and event space for up to 2000 people.

All in all, Rondo were proud to be part of a project that is set to transform the university experience of thousands of students over its lifetime.



WORK SMARTER.



OUR NEW FAST-FIX AND SNAP-LOCK NOGGINGS AND THE

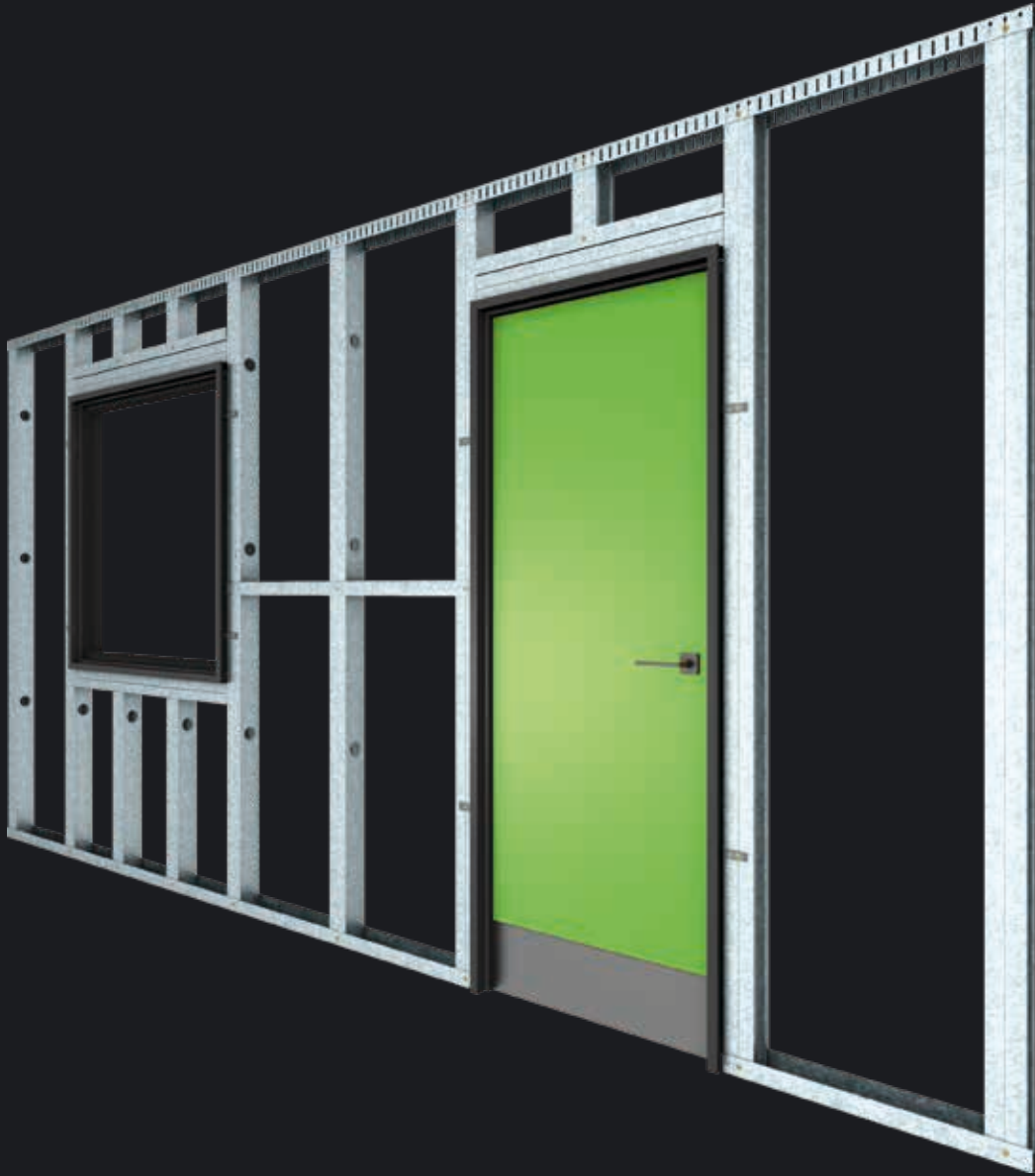
It's a whole new way of framing.

Our two clever new Noggings can be fitted *after* Stud and Track is installed, and our DUPLEX STUD® is two studs in one, taking the place of boxed Studs at internal openings.

All of this means faster installation, and that means cost savings for you.

Find out more on our website.

WORK FASTER.



NEW DUPLEX STUD® WILL SAVE YOU TIME AND MONEY.

RONDO®
www.rondoglobal.com

UPDATES

THE POPULAR RONDO APP UPDATED

We've recently updated the Rondo App for both iOS and Android.

This update includes improvements to the DUO® Estimation Wizard to allow for the improved DUO2 gauge at 0.30BMT.

We've also improved the 'Where to Buy' functionality so you can find your local Rondo stockists even easier.

To access these new features, download the update today or, if you haven't yet downloaded our App, head to the Apple iOS or Google Play store.

The Rondo App is a practical tool that allows you to:

- Work out what Rondo products are needed for a project
- Calculate maximum loads and spans for a wall or ceiling design
- Determine the most economical Rondo Steel Stud Wall Framing System design possible for a particular layout
- Estimate what quantity of Rondo products are needed and the pack size they come in
- Find out the radius required, sweep angle and length of arc for curved designs
- Email yourself or colleagues a copy of the wall or ceiling design
- Locate your closest Rondo stockist, either by current location using GPS technology or by running a search
- Simply email your calculated results directly to a Rondo Network Partner to receive a quote, click to call or get directions using Google maps
- Access images and descriptions of over 250 Rondo products

Download from the Apple iOS or Google Play store today by searching Rondo Building Services



Let's Get Social!



See our technical solutions, whitepapers and case studies



Latest news on Rondo products, projects and giveaways



Tag us in your latest project and we'll post it to our Instagram



Subscribe to view our latest product demonstrations and tips



TO WIN, POST A PICTURE TO INSTAGRAM

Simply follow us on Instagram and tag a photo of a Rondo product on site or an architectural drawing that shows Rondo product using **#rondobestbuilding** on Instagram to win lunch for you and your workmates. Entries close Wednesday 12pm weekly for the month of November. Each lucky winner will be announced Thursday morning at 11am weekly, with one giveaway every Friday for the month of November (valid worldwide).

RONDO[®]
www.rondoglobal.com

RACING AHEAD WITH KIDS UNDER COVER



On Saturday, July 7 Rondo hosted our annual Kids Under Cover Race day to support charity partner, Kids Under Cover (KUC). Organised by the Rondo QLD Team, the event was held at the Gold Coast Turf Club.

Our Executive General Manager, Greg Thomas kicked things off by welcoming everyone to the event.

Likewise, Mark Forbes did a fantastic job as the MC and led numerous engaging competitions throughout the day, including fashions on the field and Punters Club. Kerry Butcher from KUC presented to all attendees on KUC'S work and their history of involvement with Rondo.

The meet had 8 races throughout the day with the major race titled the, Kids Under Cover Cup Benchmark 70 Handicap. Naturally, race winner, Future Event wasn't the only champion of the day – John Kelly from Precision Interior Linings won the male fashions on the field, while Megan Wadsworth of Wadsworth Contracting took home the competitive ladies honours.

With several Rondo contractors as well as distributors, the event was a great success and with extra donations on the day, it raised \$33,500 for KUC's cause.



KUC Representative, Kerry Butcher, explained that the amount raised with Rondo since we began our partnership together was enough to fund two entirely new studio apartments, which would help place at risk young people into secure and stable accommodation. It was an honour presenting Kerry with the big cheque and we are sure the funds will be used well in continuing KUC's great work. A big thank you to all our sponsors who made the day possible:

- CSR Gyprock
- CSR Cemintel
- CSR Himmel
- USG Boral
- Superior Walls & Ceilings
- Wodlac
- Precision Interior Linings
- Wadsworth Contracting
- Bayside Plasterboard
- North Australian Contracting
- Barry Hamilton Transport
- Auzline
- James Hardie

A special mention also goes to two of our key distributors Betaboard and PlastaMasta Northside who couldn't make the day but were kind enough to donate.

A LITTLE MORE ABOUT KUC

Kids Under Cover takes an early-intervention approach to preventing youth homelessness by providing secure, stable accommodation and scholarships for young people at-risk of homelessness.

Their model is simple: Building studios for homeless and at-risk youth that keeps them connected to family and supporting their education through scholarships to ensure ongoing engagement with education or job training.

Each studio is a great investment as they help up to 5 families over the course of their life.

For our part, Rondo will continue working with Kids Under Cover to help raise awareness of their fight to alleviate youth homelessness through promotional support and charitable activities.

To find out more, or to make a donation, please visit www.kuc.org.au



ABOVE: Executive General Manager, Greg Thomas welcoming everyone to the event. BELOW: Mark Callaghan (QLD State Manager) presenting Race Day Cheque to Kerry Butcher from KUC.





RONDO®