



MAY 2019

RONDO®

insider

MIDLAND GATE
WESTERN AUSTRALIA

DARLING SQUARE
NEW SOUTH WALES

BUNDABERG PRIVATE HOSPITAL
QUEENSLAND

ADELAIDE BOTANIC HIGH
SOUTH AUSTRALIA

AURORA APARTMENTS
VICTORIA

PARK HYATT
AUCKLAND

AND MORE...

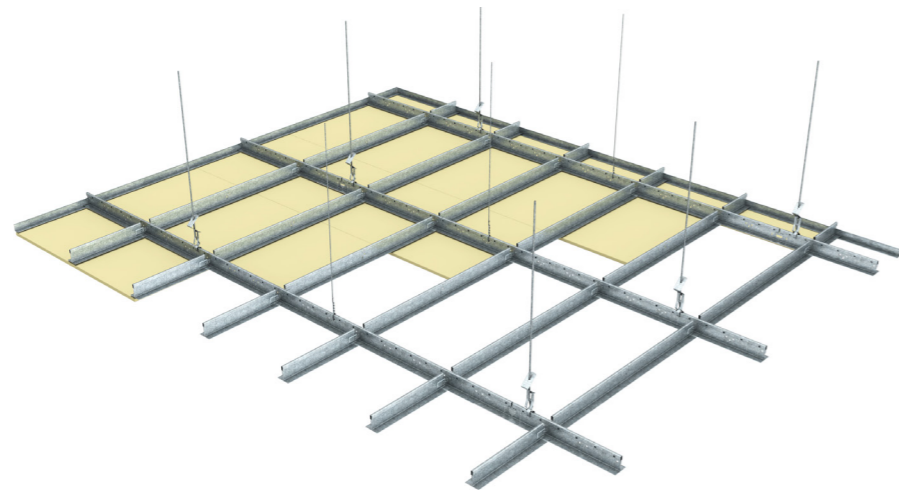
PLUS
NEWS & UPDATES

RONDO
XPRESS[®]
 DRYWALL GRID SYSTEM



EXCEPTIONALLY GOOD.
EXCEPTIONALLY FAST.

- Fast to install for both direct-fix and suspended concealed ceilings
 - Incorporates the popular Quick Release Clip technology
- Main Tees and Cross Tees are available in both 38mm and slimline 24mm Face



RONDO[®]

CONTENTS

PROJECTS:



WESTERN AUSTRALIA WONDER
 Western Australia



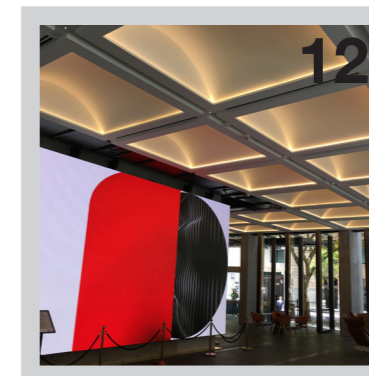
MOSMAN PARK CENTRE
 Western Australia



DARLING SQUARE
 New South Wales



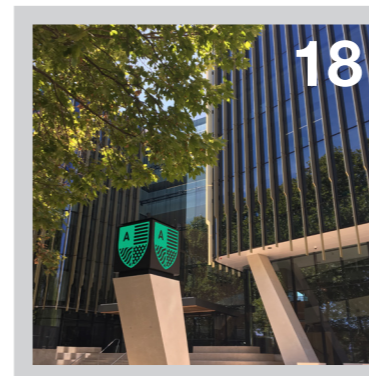
TRAVELODGE MASCOT
 New South Wales



CREEK ON FLEEK
 Queensland



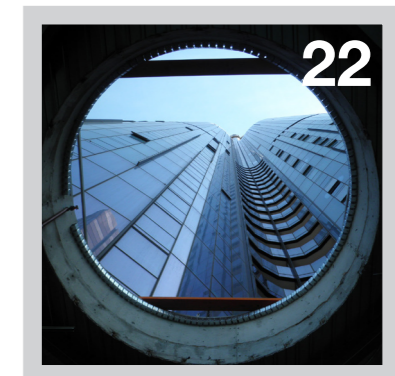
BUNDABERG PRIVATE HOSPITAL
 Queensland



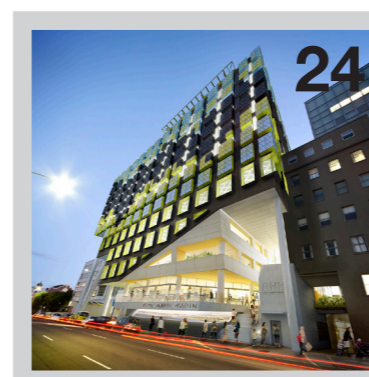
ADELAIDE BOTANIC HIGH
 South Australia



MITCHEM MEMORIAL LIBRARY
 South Australia



AURORA APARTMENTS
 Victoria



ROYAL HOBART HOSPITAL
 Tasmania



132 HALSEY ST
 Auckland

UPDATES:

TRACKLOCK PARTNERSHIP: 28

SKILLS TRAINING: 29

WESTERN AUSTRALIA WONDERLAND

Midland Gate Shopping Centre, a spectacular achievement for all involved. Project overall value 150M.



A spectacular achievement for the Doric Group (Doric Investments Pty Ltd), contracted for Midland Gate Shopping Centre, Western Australia. Beginning in January 2018, the projects overall value is an impressive \$150 million. The stage finishing in January 2019 valued \$80 million of which Rondo was heavily involved.

Ceiling and Walls Contractors executed Hames Sharley Architects design. The building doubled in size expanding to an extra 18,610 square metres of gross leasable area. Part of the extension included an additional Southern Entrance leading to an extra 4,000 carpark bays. Internally, the food court has been upgraded to an 'alfresco' area divided to four seating zones. The main seating area made up of lounges and fitting that overlook the play area.

Ceiling and Walls Contractors have been a loyal customer to Rondo for almost 20 years. Ceiling and Walls Contractors are highly experienced with Rondo products. Our Rondo Technical Representative was readily available to visit site and provide technical assistance.

KEYLOCK® Concealed Ceiling System, DUO® Exposed Grid System and Steel Stud & Track were used throughout the project. It had been mentioned that Rondo provided quick delivery, exceptional customer service and achievable deadlines through the duration of the project.

Rondo products included:

- KEY-LOCK® Concealed Ceiling System
- DUO® Exposed Grid Ceiling System
- Steel Stud & Track Framing System
- Panther® Access Panels



SHOPPING CENTRE PENINSULA



Located in Western Australia, the Mosman Park Shopping Centre began construction in April 2018, and a short seven months later it was complete. The shopping centre redevelopment was built by 'BADGE Constructions (WA) Pty Ltd and uniquely borders both the Indian Ocean on its western edge, and the stunning shores of the Swan River on its eastern outskirts. The \$4 Million-dollar redevelopment saw a new two storey add on with multiple inclusions.

Mosman Park is one of Perth's finest locations, small industrial and commercial activity complements a diverse range of development, including some of the most exclusive property development in WA. Rondo was very proud to be involved with this project, providing engineered designs and the supply chain was via Rondo's Partner Network Distributor, Johns Building Supplies.

The Contractor 'Red Oak Contracts PTY LTD' have been on board with Rondo distributor Johns Building Supplies for 2 years now, and they continue to choose Rondo due to their relationship, technical support and product quality.

Rondo provided Red Oak Contracts PTY LTD with the external wall, soffit and bulkhead designs which were submitted to BADGE and Hames Sharley Architects for approval. Rondo's technical team highlight the quality of workmanship on this project, especially when comparing the designs to the finished installation.

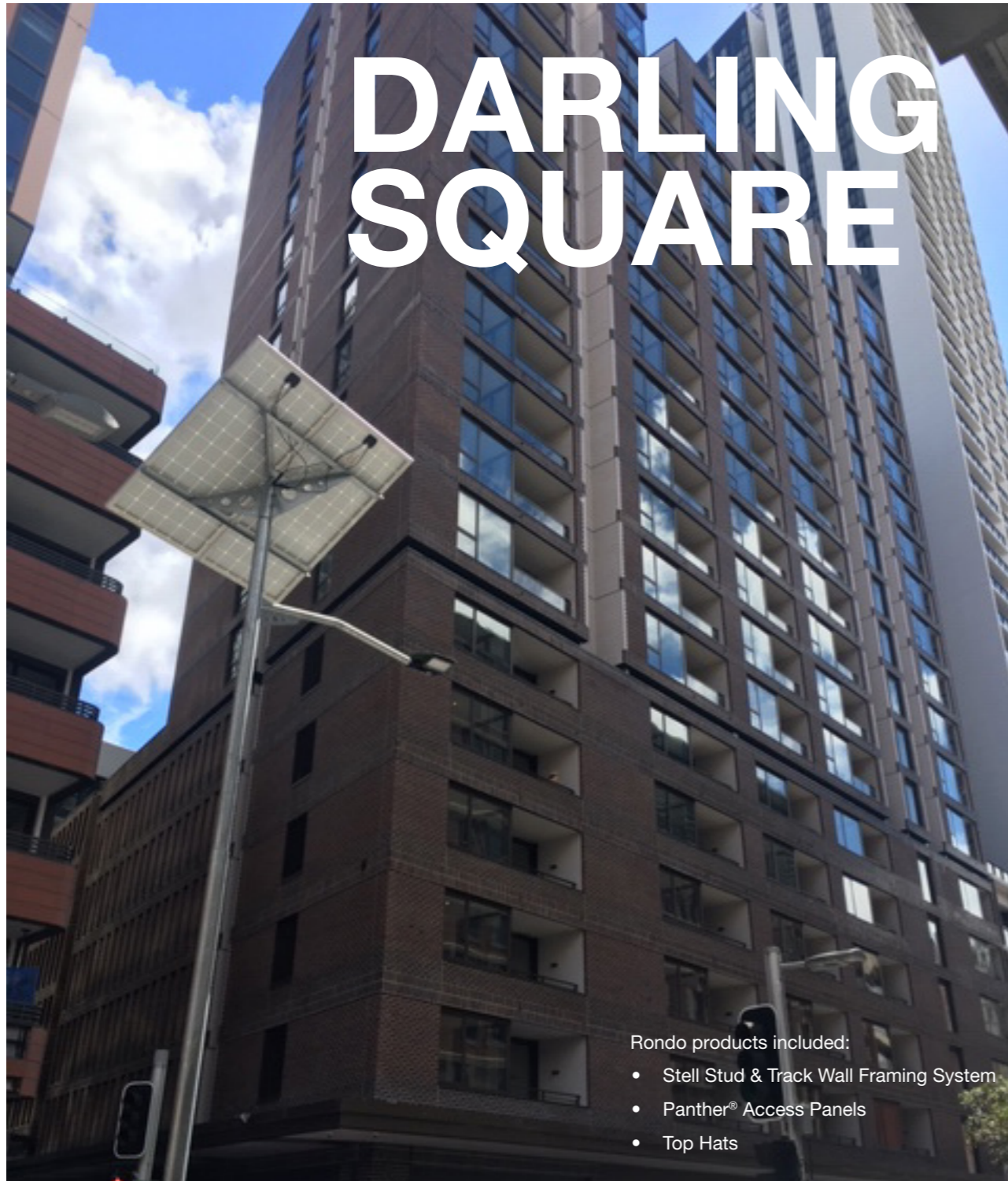
The stock was supplied on time and accurate with Rondo working with all parties throughout this project which is a credit to all involved.

The Ground floor includes 5 new sizable retail spaces (385sq m) a lobby, 31 offsite car parking bays and building service areas. The first floor included one large office space (700sq m) as well as alfresco dining, 2 restaurants, 3 reconfigured retail spaces, a lobby, restrooms, accessible toilet, storage bins, walkway and a service area and loading dock. The Mosman Park Shopping Centre will provide more employment in the area and space for business.



Rondo products included:

- DUO® Exposed Grid Ceiling System
- Top Hats
- Steel Stud & Track Framing System



DARLING SQUARE

Rondo products included:

- Steel Stud & Track Wall Framing System
- Panther® Access Panels
- Top Hats

Join us in celebrating the centre that has it all, Darling Square. Lendlease was awarded the contract to redevelop what was formally known as the Sydney Entertainment site - located just minutes from China Town. Buildup Interior carried out construction of the internal fit out packages - Rondo Steel Stud Walls and Ceilings in July 2018 that had been designed with Kelly Zammit. Buildup Interior chose to use Rondo over competitive brands due to a long standing relationship with, and understanding of its service offering.

Prior to commencement Rondo's engineering department provided a Design-R specification covering wall types for Internal & External frames. The team further analysed seismic performance and the high wind pressure for all top end apartments that also included a library. Buildup Interior were grateful for the technical support, transparency and quality provided. The Rondo team were onsite each week, especially in circumstances requiring immediate attention to quickly resolve complex technical enquiries.

TRAVELODGE MASCOT

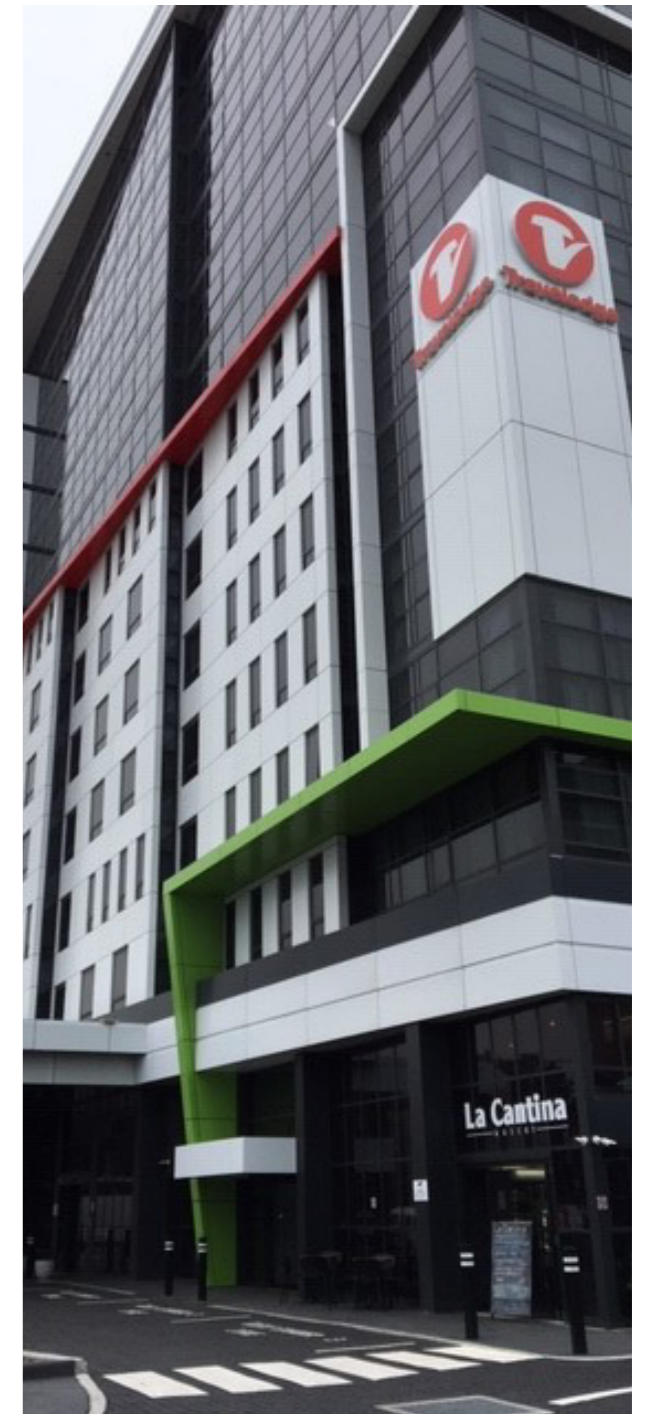
A successful Parkview Group development that is now worth \$33.5 million. Schematics Architecture designed the 13 storey 'Travelodge' building consisting of 236 rooms, 6 levels of office space, a café, restaurant, 4-storey carpark and located only 5 minutes from Sydney's Mascot Airport.

CBS-A and Composite Industries began construction back in September 2015. The Rondo technical team provided ongoing support on the engineering of blade walls to façade in the main hotel building and car park. Internal walls were sound and fire rated while seismic measures were taken into consideration due to high wind areas. Rondo further provided external designs for the large wall in the loading dock area.

Composite industries chose Rondo due to the positive project experience and technical support.

Rondo products included:

- MAXIFRAME® External Wall Framing System
- KEY-LOCK® Concealed Ceiling System
- Steel Stud & Track Drywall Framing System



CREEK ON FLEEK





A SIX million dollar office-block redevelopment that has Brisbane city in awe. Broad Constructions awarded the build, accompanied by contractors Fine Line Commercial Interior Linings, they began the project designed by Cameron & Co architects, and the project completed in April 2018. The Rondo team were engaged in the project to design the ceiling framework for the lobby of the twenty-five-storey building.

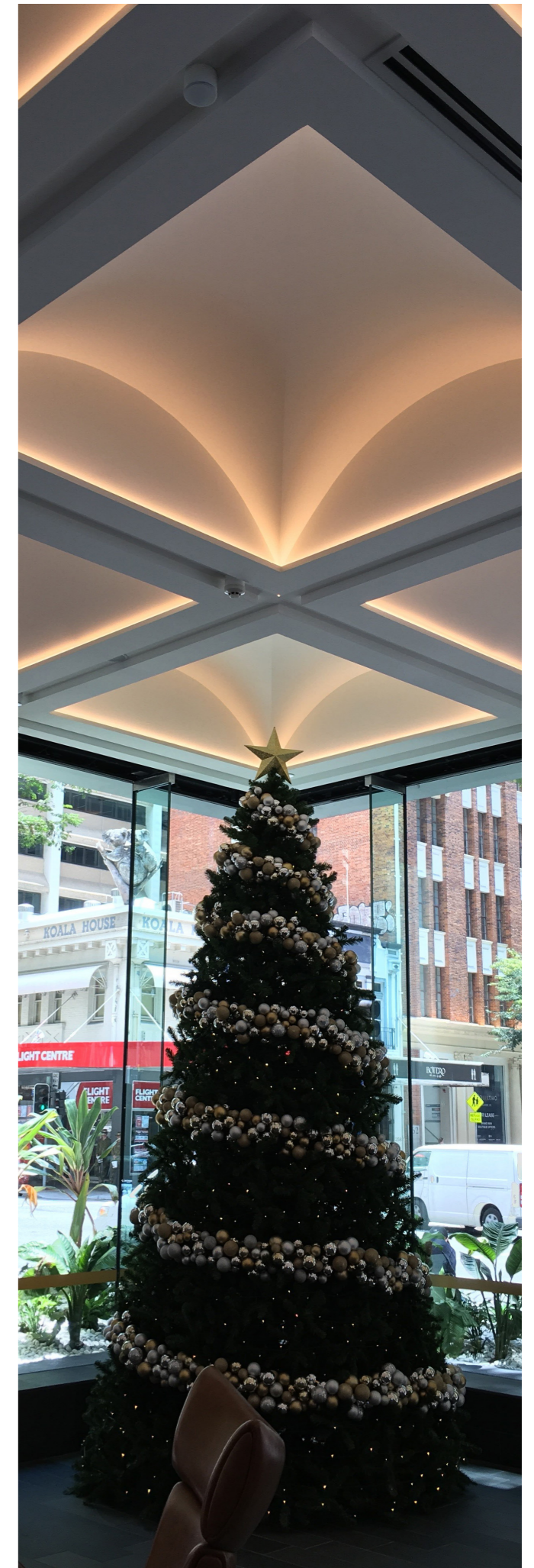
The Rondo KEY-LOCK® suspended ceiling system with radius top cross rail was specified to create the proposed arch ceiling, along with Steel Stud and Track for the walls in other areas of the project.

During the construction, there was one area of concern which was the direction change of the arches in the ceiling. However, with the contractors knowledge and experience it was decided to blend an internal angle joint with an external angle to run through the same line of the arch.

It has been mentioned that Rondo's design advice and consultancy brought significant benefits to the ease and completion of the project.

Rondo products included:

- KEY-LOCK® Concealed Ceiling System
- Steel Stud & Track Drywall Framing System



BUNDABERG PRIVATE HOSPITAL

Rondo products included:

- DUO® Exposed Grid Ceiling System
- KEY-LOCK® Concealed Ceiling System
- Steel Stud & Track Framing System

Northsun Commercial Interiors designed and built the fourth hospital in Bundaberg which was recently completed. Located at 51 Commercial Street in Bundaberg, this new private medical facility will benefit the community enormously. In particular public patients needing cataract surgery after Wide Bay Hospital and Health Service and Bundaberg Private Day Hospital announced a public-private partnership agreement.

Patient appointments and operations will start in mid-2019 as a result of the Architect and Builder working together and being completed in just five months.

Local contractors, Tom and Patrick Fogarty from Fogarty Bros who have been commercial plasterers in Bundaberg for over 15 years and were contracted to install the internal and external linings.

Due to its location, external wall designs for cyclonic conditions was needed, and pre-construction meetings were needed to discuss benefits and limitations. The builder utilised extra structural steel where needed and custom suit windows to fit the Rondo design.

The Fogarty Bros had not installed an external wall frame of this magnitude before, however, with Rondo's design and support, the Fogarty Bros found the whole process easy to understand and did an amazing job.

The job had a tight time frame. Design solutions were needed quickly and readily onsite due to the project being a design and construct. With onsite team and Rondo working together proactively, delivery was 100% on time which, enabled all teams to stay on track.



ADELAIDE BOTANIC HIGH-SCHOOL

In the heart of South Australia's CBD stands a 100-million-dollar Leadlease project. The award-winning collaboration with Cox Architecture and Designinc Adelaide developed an unforgettable school experience for students attending Adelaide's Botanic High. More so, the staff are delighted to welcome an extra 1,250 students to study from an eight storey building while overlooking a spectacular city.

The initial project had been executed in August 2017. Customising the building with KEY-LOCK® Suspended Ceiling System, particularly Rondo 155 Furring Chanel which is 48mm wide, and required perforated plasterboard to be attached. Bulkheads, soffit areas and external walls were designed by the Rondo Engineering team.

The Rondo Technical Sales team regularly visited the site to provide support and advise, leaving no areas of concern to be questioned including fire rated ceilings or seismic requirements.

The contractor Ceiling & Wall Contractors completed the installations with the highest quality finishes, and delivered another successful project in South Australia.

Rondo products included:

- KEY-LOCK® Concealed Ceiling System



MITCHEM MEMORIAL LIBRARY



The Mitchem Library located next to the soldier's memorial, is a library that caters for everyone, young and old. Located only 5kms from the CBD of Adelaide in Leafy Hawthorn, the construction began in May 2018 by builder Shape Australia Pty Ltd with a completion date of January 2019.

The architects 'Designinc Adelaide' provided a spectacular design for the job and were very impressed with the handywork and high quality of contractors 'Laser Linings Pty Ltd.' Laser Linings is a leading contractor and has been a loyal Rondo customer for over 25 years.

The project taking eight months to complete had raked ceilings implemented for the perforated palsterboard. Seismic requirements involved bracing back to trusses when installing our ceiling system.

Laser linings are highly qualified and experienced with installing Rondo products. Our technical representative Graham Eldridge says that the highlight from the job was "The finish, no defects and built to a quality finish"



Rondo products included:

- DUO® Exposed Grid Ceiling System
- KEY-LOCK® Concealed Ceiling System
- Steel Stud & Track Framing System





AURORA APARTMENTS

With a project value of \$380 million, the three year journey commenced in 2016 with a proposed completion date of September 2019. Probuild Constructions were awarded the building contract. Architect Elenberg Fraser worked with Probuild Constructions, along with Express Interiors, one of the largest contractors in VIC to head up the project.

Located in the heart of Melbourne City, the Aurora Apartments lie directly opposite Melbourne Central Train Station. Filling this 92-storey monster is 941 Apartments, 252 serviced apartments, 17 Shops and 4000m² of office space.

Rondos key responsibilities included providing designs for the following areas: lobby walls and ceilings, internal apartment walls, and a technical representative visited the site weekly to ensure technical support was readily available.

The Rondo team worked with the architect and builder to overcome the specific fire curtain wall design requirement for the lobby walls, ceiling and bulkhead. Rondo benefited the project through multiple design options and regular site inspections which supported both the contractor and the builder. The project is exposed to high winds due to the height of the building and required quick turnaround times for crane lifts.

Rondo was chosen as the preferred supplier due to product quality and certification being the critical drivers.

The design aspect and the height of the building were the highlight of the project. The sheer size of the project is amazing.

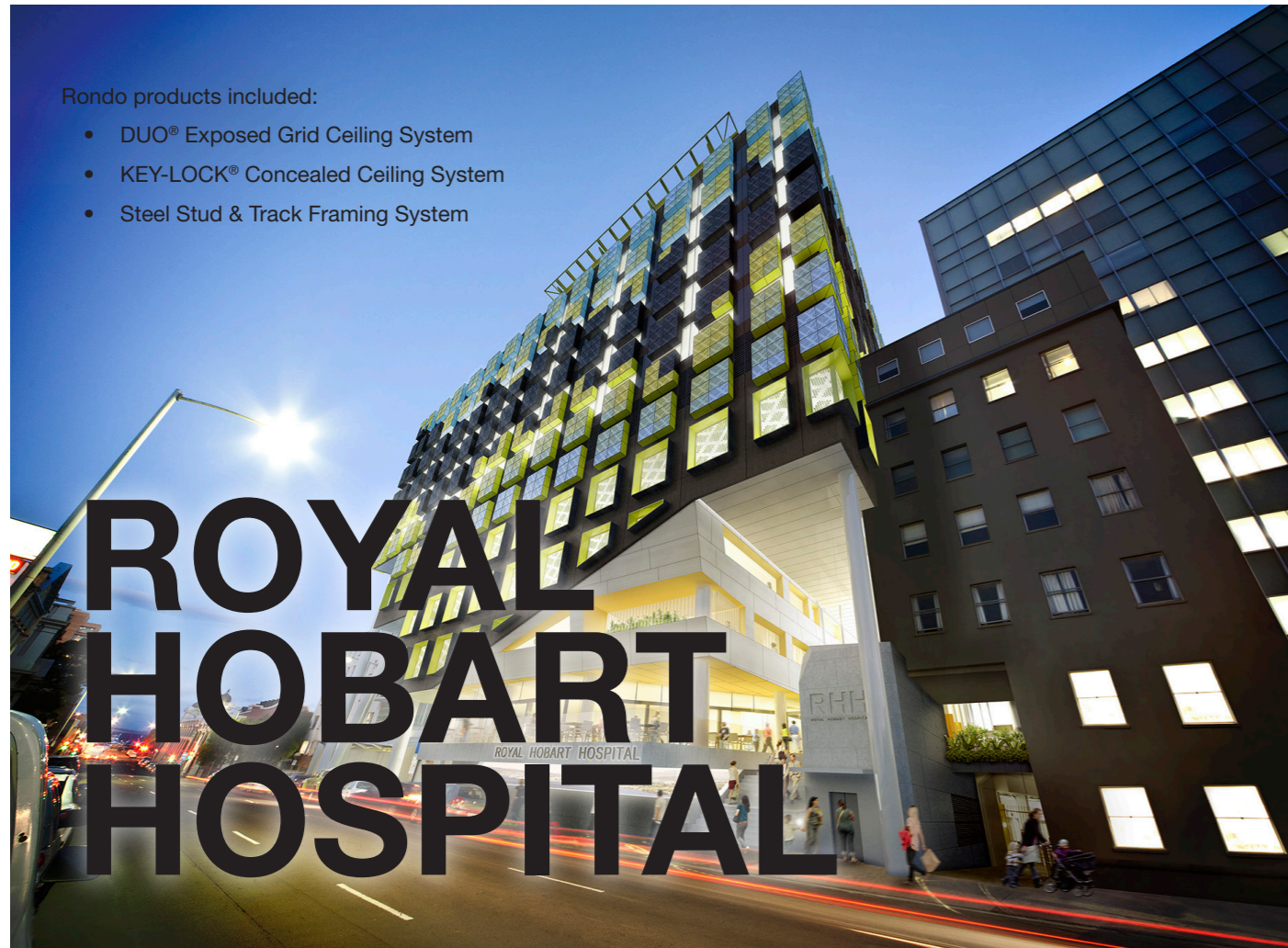
Rondo products included:

- QUIET STUD Acoustic Wall Framing
- Steel Stud & Track Framing System



Rondo products included:

- DUO® Exposed Grid Ceiling System
- KEY-LOCK® Concealed Ceiling System
- Steel Stud & Track Framing System



ROYAL HOBART HOSPITAL

John Holland are at their final stages of completing yet another multimillion dollar job - Royal Hobart Hospital. Lyon Architecture and Contractors Q3 Group have also made a significant contribution towards the success of this \$550 Million project.

There were a large amount of complex design and construction situations that arose on site, such issues included the large reception counters with heavy sliding glass panels, along with 5,100mm walls with fixtures and various linings. However, our engineering team provided ongoing support and a Technical Representative visited the site often ensuring these issues were overcome.

Extensive designs were required for the external walls due to high wind pressures. The building is rated as level 4 importance and needed to be designed to meet seismic criteria. Following a vital wind report, the results showed varying pressures on all four sides and in different locations. This made it necessary that each external wall encompassed a different design. The project also required fire rated walls and ceilings.

As the project was located in Hobart, it required the project team including Rondo to work together to be organised and keep a clear path of communication. This resulted in full specification being completed early in the process, and the specification included Rondo Wall Stud, KEY-LOCK® Concealed Ceiling System, DUO® Exposed Grid Ceiling Systems, External Soffit Systems as well as our extensive knowledge on seismic design.

Delivering to site was a challenge throughout the project however the Rondo distribution and customer service team worked closely with the contractor and distributor to ensure accurate and seamless delivery.

Undoubtedly the highlight of the project is seeing the teams working closely together in particular with Lyons Architecture and having Rondo Walls, Ceilings and Accessories fully specified throughout the project a year in advance.

SOUTHBANK



Yet again, Melbourne may now welcome another skyscraper to their city. The dynamic duo Multiplex and Expoconti are expected to officially complete the Guilford Bell and Graham Fisher project in May 2019. The project began in April 2016 with the intention of providing all residents the opportunity to live in the heart of the city. By the time of completion, the building will consist of 52 Levels and 597 apartments split between 1, 2 and 3 bedrooms.

Expoconti pride themselves on using quality products from reputable suppliers and have been a Rondo customer for over 20 years. For this particular project, Rondo had been engaged to supply Steel Stud & Track and KEY-LOCK® Concealed Ceiling System for the project which is exposed to high winds due to its location and height.

Regular site visits by a Rondo Technical Representative ensured timely responses to technical questions, including complex designs for the lobbies stone walls.

Rondo products included:

- KEY-LOCK® Concealed Ceiling System
- QUIET STUD Acoustic Wall Framing System
- Steel Stud & Track Framing System

132 HALSEY



PARK HYATT



Auckland's best waterfront living. 132 Halsey Street, developed by Willis Bond & Co, designed by Athfield architects, together they have redefined convenient living. The 51 luxury apartments are generously sized and offer outstanding views over the beautiful Viaduct Harbour. Located marina-side in one of Auckland's most exciting new precincts. It also straddles Auckland's CBD making it Auckland's premier destination.

Rondo provided the full interior package, including walls and ceilings for the residential gym, business centre and boutique theatre.

Rondo products included:

- KEY-LOCK® Concealed Ceiling System
- Steel Stud & Track Framing System



Park Hyatt Auckland. Built with China Hawkins Constructions and due to open in late 2019. The design was carried out through a collaboration of firms including Bossley Architects, AR+D, and Conran + Partners.

Park Hyatt is located right on the waterfront and is subject to very high winds, therefore, Rondo provided a full wind and gravity design for the interior walls and ceilings. Due to tight planum space and extremely congested plenum areas, Rondo's new XPRESS® Drywall Grid System was the ideal ceiling system to use. This maximised the ceiling heights in all guest rooms while offering compliant plenum vertical clearances. Contractors implemented Rondo's intricate feature ceilings and bulkheads throughout the entire building, such areas included the lobby, restaurants and conference areas.



Rondo products included:

- XPRESS® Concealed Ceiling System
- Steel Stud & Track Framing System
- KEY-LOCK® Concealed Ceiling System

RONDO AND TRACKLOK® PARTNER TO PROVIDE LEADING SEISMIC WALL AND CEILING SOLUTIONS TO THE AUSTRALIAN MARKET

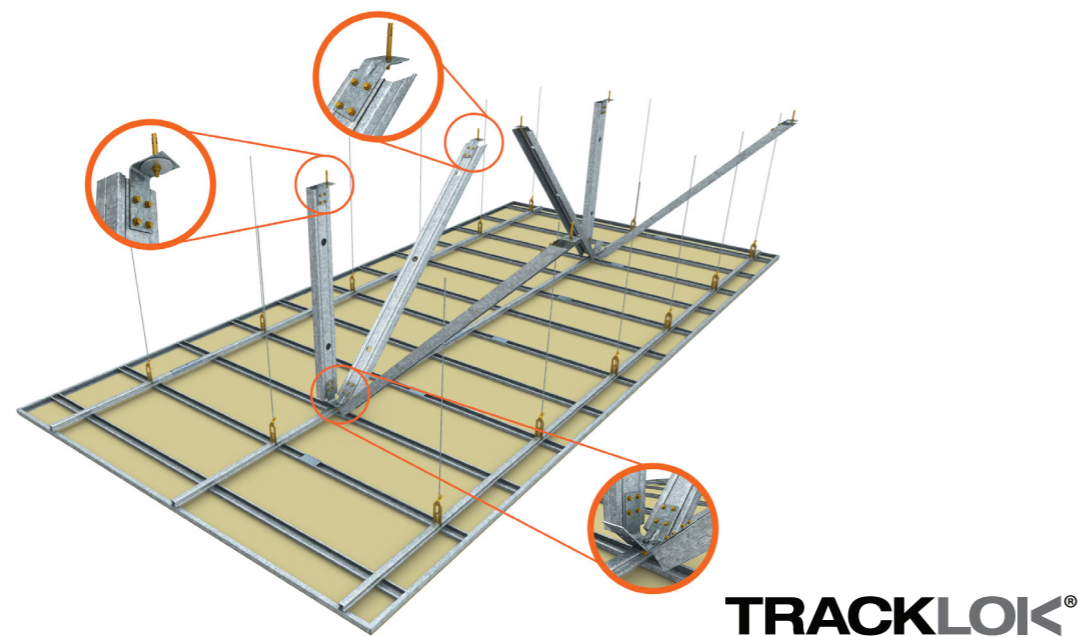
Rondo Building Services Pty Ltd, is excited to announce a multi-year, exclusive arrangement with TRACKLOK® Ltd to supply the Australian commercial construction sector with pre-engineered seismic solutions for wall and ceiling systems.

“We’re focused on delivering solutions that add value to our Customers. In our discussions with TRACKLOK® Ltd we found that by incorporating their products in our Seismic Wall and Ceiling Systems, our Customers would benefit from quicker installations and therefore reduced labour costs. Being able to speed up installation whilst achieving seismic compliance, is an attractive offer to our customers” said Paul Schampers, GM Sales and Marketing for Rondo.

Rondo Building Services Pty Ltd is working to integrate TRACKLOK® and GRIDLOK® products into their wall and ceiling offerings, allowing customers access to the very best in seismic compliance with a view to improving resiliency in the built environment.

With a full range of TRACKLOK® bracing clips for wall systems and GRIDLOK® bracing clips for ceiling systems this exclusive arrangement will allow Rondo Building Services Pty Ltd to offer complete packages designed to achieve compliance while streamlining the build process and reducing labour.

“With over six years of testing and real-world experience in highly seismic regions of New Zealand we are pleased to partner with Rondo Building Services Pty Ltd to ensure Australia has access to these unique seismic bracing solutions” said Shaun Evans, Director of TRACKLOK® Ltd. “The ability of Rondo Building Services Pty Ltd’s distributor network and engineering capabilities will ensure seismic compliance is an opportunity for all.”



Rondo Skills Training

Rondo’s primary purpose is to “provide our customers with the industry leading systems, complimented with outstanding customer service”. Dominic Gillespie, Rondos Product and Training Manager, has revamped the skills Training Programs to build on the aspiration.

Dominic has restructured the program to create more value to customers, by focusing on the key specifics of the products while maintaining the hands on element.

Skills 2 training has already been held in VIC, NSW, WA and New Zealand with more sessions coming soon.

The training covers the features, benefits and the technical aspects of the Rondo product range which includes; Ceiling Systems, Wall Systems, Finished Sections, Access Panels, and Seismic Solutions.

Training will be held at all Rondo offices within Australia, and New Zealand. For more information speak to your Rondo representative.





RONDO[®]