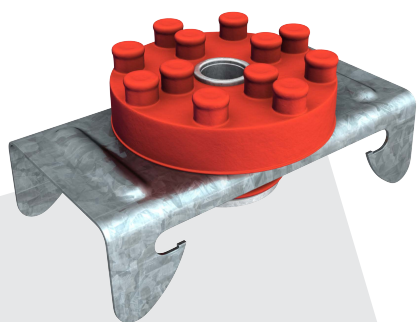


PRODUCT DATA SHEET

RONDO®

ACOUSTIC ASSEMBLIES



Rondo offers a selection of Acoustic Mounts that complement our range of wall and ceiling systems and have been tested to comply with the Australian National Construction Code (NCC) and New Zealand Building Codes (NZBC).

Our new Acoustic Wall & Ceiling Systems Manual shows how our systems comply with all relevant codes and will help designers and engineers to design their next project with confidence.

AIRBORNE & SOUND INSULATION/ VERSATILE / SIMPLE INTEGRATION

BENEFITS

- NCC and NZBC Compliant Acoustic Systems for both walls and ceilings
- Consideration of Airborne & Impact Sound Performance
- Compatibility with each Rondo System
- The range of acoustic mounts and clips incorporates a rubber acoustic pad
- Suitable for a range of wall and ceiling applications
- Rondo's STWC Clip provides impact sound insulation improving the performance of the plasterboard, acoustic batt, wall or ceiling lining
- Quick and easy to install
- Rondo's BETAGRIP Sound Isolation Clip delivers an innovative design which encompasses the above acoustic properties whilst providing adjustment for the level of the plasterboard lining.

SUITABLE FOR

- Rondo Wall and Ceiling Systems as detailed throughout the Acoustic Assemblies design manual.

RONDO

STRUCTURAL DESIGN ACTIONS

| STANDARDS & CODES | CEILING | | | | | | WALLS | | | ACCESSORIES | FINISHING SECTIONS | | ACCESS PANELS | FASTENERS |
|--|---------|------|----------|--------|------------|--------------|--------------|-----------|------------|-------------|--------------------|------------|---------------|------------|
| | DUO | DONN | KEY-LOCK | XPRESS | WALK-ABOUT | STUD & TRACK | STUD & TRACK | MAXIFRAME | QUIET STUD | TOP HATS | EXANGLE | EXANGLE RT | PANTHER | CERT-R-FIX |
| ASTM C635/C635M-17 Standard Specification for Manufacture, Performance and Testing of Metal Suspension Systems for Acoustical Tile and Lay-in Panel Ceilings | | | | | | | | | | | | | | |
| AS 3623:1993 Domestic metal framing | | | | | | | | | | | | | | |
| AS/NZS 1657:2018 Fixed platforms, walkways, stairways & ladders. Design, construction & installation | | | | | | | | | | | | | | |
| AS/NZS 1397:2021 Continuous hot-dip metallic coated steel sheet & strip - Coatings of zinc & zinc alloyed with aluminium & magnesium | * | | | | | | | | | | | | | |
| AS/NZS 1664.1:1997 Aluminium structures - Limit state design | ● | | | | | | | | | | | | | |
| AS/NZS 1866:1997 Aluminium & aluminium alloys - Extruded rod, bar, solid & hollow shapes | ● | | | | | | | | | | | | | |
| AS/NZS 2311:2017 Guide to the painting of buildings | | | | | | | | | | | | | | |
| AS/NZS 2589:2017 Gypsum Linings - Application & finishing | | | | | | | | | | | | | | |

- * EXCLUDES ALUMINIUM
- APPLIES TO ALUMINIUM GRID ONLY
- REFER TO CERT-R-FIX MANUAL

For comprehensive design and installation guides please [click here](#) to access the **Rondo Professional Series**

MATERIAL SAFETY DATA INFORMATION

MATERIALS

Products manufactured by Rondo Building Services are produced from coated steel coil material which is classified as a non-hazardous material.

PRODUCTION PROCESSES

A water-based soluble lubricant is used to assist with the roll forming process. These soluble lubricants are not considered hazardous when used as recommended by the manufacturer.

HANDLING AND STORAGE

Products are supplied in pack and sub-pack quantities and should be handled in accordance with the recommendations contained in AS 1470 – Health and Safety at Work Principles and Practice.

Where mechanical lifting or moving equipment is required, trained, and licensed operators are to be used.

Metal products should be stored in an environmentally friendly area away from airborne contaminants such as acid and salt sprays.

SAFETY

It is our recommendation that PPE should be worn when handling metal products (AS 2161 –Occupational Protective Gloves) and that they should be checked regularly for damage.

People with sensitive skin conditions should seek medical advice before prolonged handling of metal products: hands should be washed before eating and for personal hygiene.

Safety glasses (AS/NZS 1336) should be worn when cutting metal sections.

SITE TRAINING

It is the responsibility of the contractor to ensure their employees are trained in onsite WHS procedures as these can vary from site to site.

COMBUSTIBILITY

For more information on the steel used by Rondo visit www.steel.com.au or [click here](#).



RONDO SUSTAINABILITY ADVANTAGE

PRODUCT DATA SHEET



For more information on the Rondo Sustainability Advantage [click here](#)

ENVIRONMENTAL PRODUCT DECLARATION (EPD)

The Rondo EPD provides to a customer the Life Cycle Assessment (LCA) data for over 300 products and 53 product families.

source the LCA data by selecting the required part numbers that make up the system within one EPD.

The Rondo EPD was certified, and made available to Rondo customers in December 2020, [click here](#) to download.



RONDO WARRANTY

Rondo's quality products are backed by our comprehensive warranty.

With minimal exclusions, our warranty provided optimal peace of mind.

For more information on our warranty [click here](#).



CERTIFICATIONS

