

TECH BRIEF 92

LONG LEG DEFLECTION HEAD TRACK PLUS SUPERSIZED WASHER

The NEW Rondo Long Leg Deflection Head Track is an ideal solution for accomodating increased vertical deflection

Rondo Long Leg Deflection Head Track is an ideal solution in place of standard deflection head track, for areas susceptible to increased amounts of vertical deflection and are particularly suited for use to the underside of roof purlins to accommodate uplift.

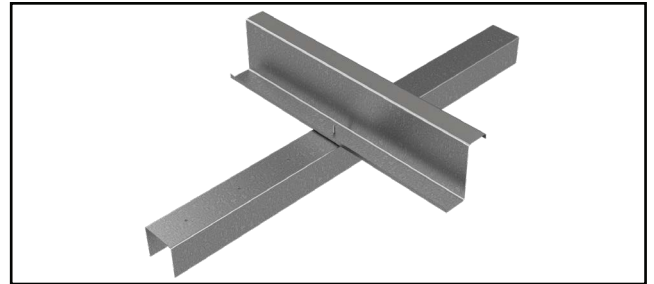


Fig 1. LLDHT attached to Purlin

A major cause of movement is wind uplift, where forces from wind cause roofs (and head tracks) to lift, with developments in long-span members and purlins, this uplift is becoming greater in some scenarios.



Fig 2. Wind uplift

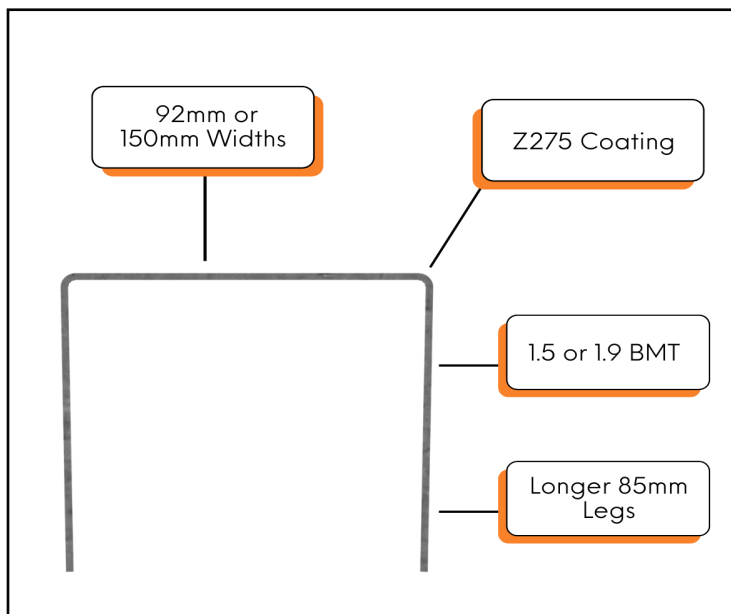


Fig. 3 LLDHT Features

The longer 85mm legs on the Rondo Long Leg Deflection Head Track provide a more generous, secure space for greater uplift.

A protective coating of Z275 provides the Long Leg Deflection Track with protection against corrosion, further decreasing the risk of wall damage.

Use with current Rondo Wall Height Tables

Rondo Long Leg Deflection Head Tracks are ideal to be used with purlins and have been designed so that the current wall height tables can be used even though there is greater deflection. The longer leg and higher base metal thickness (BMT) allows for the Long Leg Deflection Head Track to resist the greater loads without reducing the capacity of the connection.

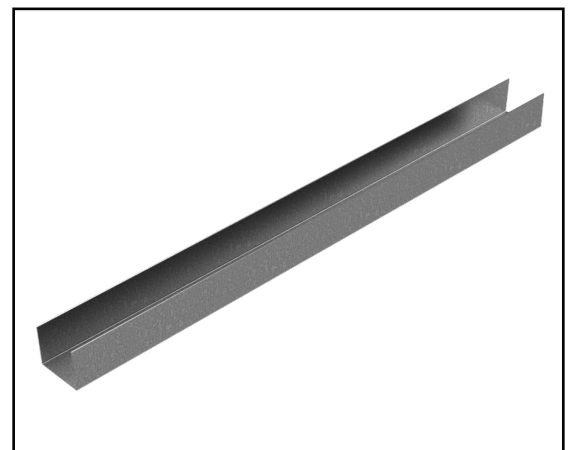


Fig 4. Long Leg Deflection Head Track

Table 1. LLDHT Product Information

Part Number	Length (mm)	Description	BMT	Weight (kg)	Stock Pack	Sub Pack
766	3000	92mm (w) x 85mm (h) Long Leg Deflection Head Track	1.5	9.5	50	1
767	3000	150mm (w) x 85mm (h) Long Leg Deflection Head Track	1.5	11.5	50	1
768	3000	92mm (w) x 85mm (h) Long Leg Deflection Head Track	1.9	12	50	1
769	3000	150mm (w) x 85mm (h) Long Leg Deflection Head Track	1.9	14.5	50	1

The Rondo Supersized Washer is an effective option for use in 150mm tracks with CERT-R-FIX® bolt fasteners. A Rondo Supersized Washer can be used with a single anchor along the centreline of the track as an alternative to two anchors (without washers) across the 150mm track width.

In addition, the washer is coated with corrosion protection and can be used on bottom and top tracks, or any location where a washer of that size is required.

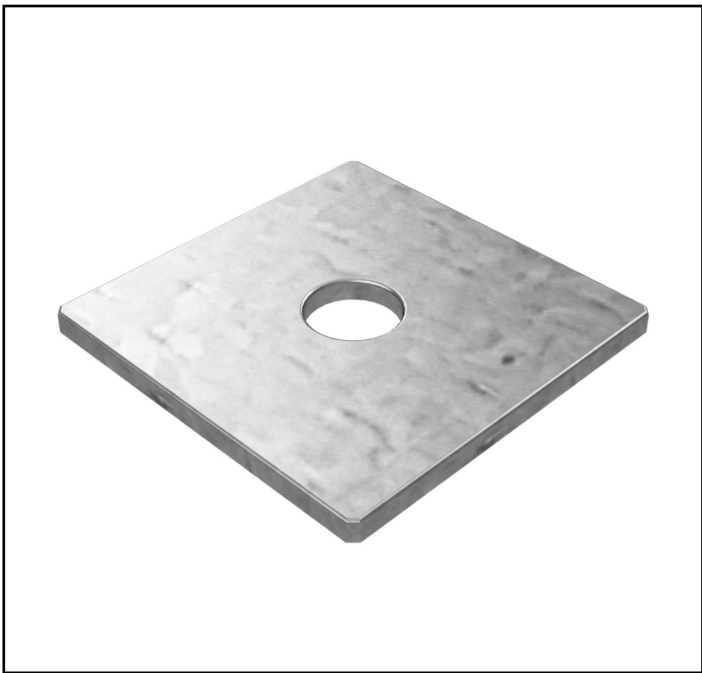


Fig 5. Rondo Supersized Washer

Part Number	Description	BMT	Weight (kg)	Stock Pack	Sub Pack
CW50	50mm (w) x 50mm (h) x 3mm (d) Washer with 10.5mm hole	3	9.88	200	200

Table 2. Supersized Washer Product Information

EXPERT TECHNICAL DESIGN SUPPORT



As a Rondo customer, you have access to the very best technical advice. To get in touch with a Rondo Technical Sales Representative, click [HERE](#).

To submit a technical enquiry form, click [HERE](#).

RONDO®

www.rondo.com.au